

Port 031 – IR

This beamline is SRC owned.

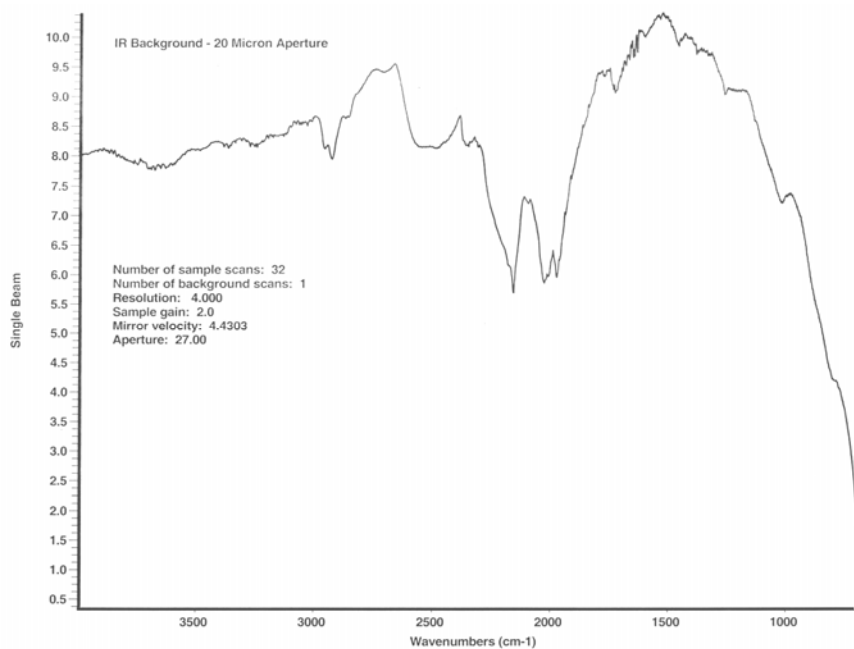
Updated June 2009

Beamline

Infrared Spectromicroscopy
608-877-2031

Manager

Bob Julian
608-877-2158
rjulian@src.wisc.edu



Technical

Energy Range	400 – 8000 cm^{-1}
Minimum Bandpass	0.125 cm^{-1}
Focused Spot	Collimated output light beam; position is 965 mm above floor. Spot size (horizontal x vertical) is 25 mm x 12 mm.
Automation	Computer controlled scanning
Special Feature(s)	Infrared microscope with programmable mapping stage